



Questionnaire Autumn 2017



1. Introduction

Dear fellow resident,

We hope by now that you have heard of the Neighbourhood Plan for Grimsargh Village, which was launched in October 2016.

The Plan is being drawn up by a Steering Committee of residents working with your Parish Councillors. However, the content is being driven by you and so it is vital that we ensure you have your say.

This questionnaire is the next step in the process of public consultation. We need to get as comprehensive a picture of views as possible, so there are a number of open boxes throughout the questionnaire, giving you plenty of scope for raising anything that you think we have missed. We sincerely hope that you use this opportunity to engage with us and give us your thoughts and ideas.

Our Plan should support and complement that of our local planning authority – Preston City Council. It will help to guide any future development within the Parish, as well as helping to protect important green spaces and other things we care about.

We are distributing one paper copy per household and we hope they will all be returned to us completed. The questionnaire can be completed by a resident or person working in the village, aged 16 or over and we particularly encourage young people to get engaged – it's their future too. If you require extra copies you can download and print them from the website: www.grimsarghneighbourhoodplan.org, pick one up from the Post office or Village Hall, or complete online at: <http://bit.ly/GrimsarghNP>.

In sections of this document there is reference to “the website” – this is always the website: www.grimsarghneighbourhoodplan.org. There is a section titled “Guidance on the Questionnaire” which gives additional details and notes, as appropriate.

You **must** enter your postcode. This will enable us to analyse the data from the forms more meaningfully and detect any more specific localised issues.

We strongly recommend you read the whole questionnaire first, before starting to fill it in.

Please return your completed questionnaire by the **30th September 2017**, to any of the following venues:

- The Village Hall
- Grimsargh St Michael's C of E School
- The Village Post Office.
- 1 Brindle Place, Redrow Estate (Chairman of the Parish Council)
- 11 Winter Hill Close, The Hills (Vice Chairman of the Parish Council)

2. General Information

2.1. Do you live in Grimsargh? (circle or delete, as appropriate)	Yes/No
2.2. Do you work in Grimsargh? (circle or delete, as appropriate)	Yes/No
2.3. Please provide your postcode (that of your workplace if you work, but are not resident, in the village):	
Note: questionnaires without a postcode can't be considered – we need this information to be able to group any particular issues to areas within the Parish.	

3. About our community

What do you feel are the assets, strengths or positive features of our community? Please tick all the ones that are **important to you**.

3.1. Feature	Tick?
a. Open and green spaces	
b. The rural character of our parish	
c. Local wildlife and habitats	
d. Sense of community	
e. Friendly and safe environment	
f. The school (St Michael's)	
g. The church and churchyard	
h. Access to the countryside	
i. Something else? Please tell us below	

--	--

What do you feel are the weaknesses or negative features of our community? Please tick all the things that **most concern you**.

3.2. Issue	Tick?
a. Pedestrian safety and lack of crossing points	
b. Car parking	
c. Volume of traffic	
d. Speed of traffic	
e. Litter	
f. Dog fouling	
g. Excessive or inappropriate signage – advertising boards, etc	
h. Something else? Please tell us below.	

4. About Homes

This is possibly one of the most important sections of this questionnaire. We need to get a comprehensive understanding of your views on any new development. There is currently only one site earmarked in the Preston Local Plan for any development in Grimsargh – for a health centre, pharmacy and small provision of extra care housing – next to the Nellie Carbis woodland (more details available on the website).

There are many planning policies against development in Grimsargh, but also many in favour and it can be difficult to influence the decisions that are made.

We need to get a good understanding of your wants and needs, in order to be able to better influence planning decisions.

Firstly whether you think any development is required at all:

	Strongly Agree	Agree	Disagree	Strongly Disagree
4.1. There is a need for new homes in Grimsargh				

If a case is made for more development – we need to gain an understanding of what type you would be most in favour of seeing – please complete irrespective of your response to the previous question:

4.2. If new homes are to be provided, I would prefer the following property types	Strongly Agree	Agree	Disagree	Strongly Disagree
a. Affordable** homes with a local connection				
b. Smaller homes or apartments (1 or 2 bed) to rent				
c. Medium homes (3 bed) to rent				
d. Larger homes (4 + bedrooms) to rent				
e. Bungalows to rent				
f. Retirement or extra care housing				
g. Care homes				
h. Smaller homes or apartments to buy (1 or 2 bed)				
i. Medium homes (3 bed) to buy				
j. Larger homes (4 + bedrooms) to buy				
k. Bungalows to buy				
l. Self- build plots				

** Affordable Housing is a term often used, but many of us don't fully understand what it means. We have put details of Preston City Councils Affordable Housing Policy on our website – it is well worth reading.

If there is to be more development – we want to know what types of development site you would be most in favour of:

4.3. If new homes are to be provided, the following development types are most appropriate:	Strongly Agree	Agree	Disagree	Strongly Disagree
a. One or two dwellings, filling gaps between houses in existing built up areas				
b. A range of small scale developments of 4-9 units				
c. Medium scale developments of 10 - 20 units				
d. Larger scale developments of over 20 units.				
e. A combination of the above				
f. All developments concentrated on one site				
g. Any other comments?				

Establishing how and where any development should be located:

4.4. These types of location would be acceptable for development:	Strongly Agree	Agree	Disagree	Strongly Disagree
a. On sites within Grimsargh Parish settlement boundary (see attached map)				
b. On greenfield sites outside the existing boundary				
c. On brownfield sites **				
d. By conversion of agricultural buildings				
e. By conversion of existing properties into apartments				
f. In gardens of existing properties				
g. Any other comments?				

** A brownfield site is defined as “previously developed land” – so had commercial or residential property built on it.

Please see the attached maps – one showing the Settlement Boundary (note, this is not yet up to date, and reflects the last planning policy changes) and the second showing the whole Parish. Please **mark on the maps** any locations you would consider acceptable for development - indicate up to five areas and mark each clearly “DEVELOP”

4.5. Are there any particular areas that you would want to see protected from development?
Give any general comment here:

Please again see the attached maps – one showing the Settlement Boundary (note, this is not yet up to date, and reflects the last planning policy changes) and the second showing the whole Parish. Please **mark on the maps** any locations you most specifically want to see protected from any development - indicate up to five areas and mark each clearly “PROTECT”

If new properties are to be built in the village – there may be particular features or standards that you care particularly about – indicate them here:

4.6. These principles should influence the design of new houses:	Strongly Agree	Agree	Disagree	Strongly Disagree
a. Have sufficient off-street parking				
b. Have a variety of architectural designs				
c. Be limited to 2 or 2.5 storeys				
d. Have a garden				
e. Have defined pavements on both sides of the road and provide good pedestrian access to local facilities				

Contract types for new sales

	Strongly Agree	Agree	Disagree	Strongly Disagree
4.7. I am in favour of the proposed government move towards generally eliminating leasehold tenures for new house sales				

Being more in harmony with nature:

	Strongly Agree	Agree	Disagree	Strongly Disagree
4.8. New homes should incorporate any recognised ecological features, e.g. swift bricks				

5. About Roads and General Highway Safety

The speed of traffic through Grimsargh is a frequently reported issue – we need to gain an understanding of any areas that are of particular concern to you:

5.1. Speeding in this area is unacceptable:	Strongly Agree	Agree	Disagree	Strongly Disagree
a. Whittingham Lane				
b. B6243 Main road through Grimsargh				
c. Anywhere else please name the road(s) here:-				

Evaluating measures to tackle speeding:

5.2. The following measures should be considered:	Strongly Agree	Agree	Disagree	Strongly Disagree
a. More speed cameras				
b. Use of “Community Speed Watch” – using volunteers to record and report speeding				
c. Any other suggestions :-				

5.3. If you or a family member have any mobility issues or push a pram through the village do you feel that there are problems due to narrow footways or any other safety concerns? If so please tell us about them below:-

There have in the past been suggestions of needing additional pedestrian crossing(s)/refuge island(s) (i.e. a raised pavement between two lines of traffic moving in opposite directions) in the village:

	Strongly Agree	Agree	Disagree	Strongly Disagree
5.4. We need additional crossing(s) / refuge island(s) in the Village				
5.5. If you indicated “Strongly Agree” or “Agree” – where in particular do you think they are needed most?				

5.6. Inconsiderate parking is a frequently reported issue in Grimsargh. What measures do you think we should seriously consider making formal enquiries about in order to address these problems? For example, double yellow lines, resident only parking permits, etc. Please say where and what type of measures you would like to see.

6. About Transport

We want to gain an understanding of the most commonly used forms of transport – and the extent of their use.

6.1. Indicate the level of your personal use of each of the following modes of transport:	Never	Rarely	Sometimes	Often
a. Motor vehicle (car, van, etc)				
b. Bus				
c. Bicycle				
d. Motorbike				
e. Wheelchair (motorised or unpowered)				
f. Walking				

Under 16s please complete 6.2 a - e

6.2. Indicate the level of use of each of the following modes of transport by under 16-year olds in your household:	Never	Rarely	Sometimes	Often
a. Motor vehicle ((i.e. travel with adult)				
b. Bus				
c. Bicycle				
d. Wheelchair (motorised or unpowered)				
e. Walking				

6.3. How many motor vehicles do you have at your house (including vans, motor homes, etc?)

6.4. What would encourage you to use public transport, cycle or walk more? Please also say how cycle ways in Grimsargh could be improved?

Use of Public Rights of Way (PROWs). These are not pavements or other general footpaths, but legally defined Rights of Way. For more details of just what a PROW is and how to find out where they are – see the website.

	Never	Rarely	Sometimes	Often
6.5. Do you use any PROWs in or around Grimsargh?				
6.6. Are there any areas or issues for improvement to PROWs that you would like to tell us about? Please list them below:-				

6.7. Are there any parts of Grimsargh where dropped kerbs are needed? Or if you have any further accessibility issues you would like to raise please list below:-				
---	--	--	--	--

7. Utilities

Although we have no direct influence over the services provided in Grimsargh, we would like you to complete the following sections, as it may help us support you to access better services for our village.

Mobile phone and broadband:

	Strongly Agree	Agree	Disagree	Strongly Disagree
7.1. Mobile phone signal where I live is poor				
7.2. Broadband speed availability where I live is poor				

Sewage and drainage services provision:

	Strongly Agree	Agree	Disagree	Strongly Disagree
7.3. Sewage/drainage is a concern for me where I live.				
7.4. Please elaborate, if you have any concerns:				

8. About employment and business

There are a few well-known businesses in the village. However – there are very many small businesses, or self-employed people located in Grimsargh – which most of us know little about.

8.1. Do you have any suggestions for creating employment opportunities in the village? Please list them here:

8.2. Do you think the village would benefit from having a (probably on-line) local tradesman/business directory available?
Yes/No (Please delete as appropriate)

	Strongly Agree	Agree	Disagree	Strongly Disagree
8.3. Grimsargh would benefit from more commercial units/industry in the village in order to create more employment?				

	Strongly Agree	Agree	Disagree	Strongly Disagree
8.4. Retail facilities in our village are currently adequate				

8.5. If you indicated “Disagree” or “Strongly Disagree” above, what other types of retail facility would you support?

9. About health and wellbeing, community and social

We want to get an understanding of how happy residents are with the health and community services that are available – if there are additional provisions that would be welcome and whether or not you would be prepared to **get involved**.

	Strongly Agree	Agree	Disagree	Strongly Disagree
9.1. National Health Service (NHS) facilities within the area are satisfactory				
9.2. If you indicated “Disagree” or “Strongly Disagree” above, what other NHS facilities would you support in our village?				
9.3. What facilities do you use for exercise and wellbeing in our village?				
9.4. Please list any additional services you would support.				
9.5. Are there any additional sports facilities you would like to see in our village? Please list them here.				
9.6. Are there any additional youth facilities/events that you would actively support in our village? Please list them here and please supply your contact details on page 17 so we can get in touch about this.				
9.7. Are you a member of any clubs or societies in the village? If so please list them here:				
9.8. If you are interested in getting involved in any existing clubs or societies, please list them here and give your contact details on page 17 and we will pass them on to the relevant club/society organiser				
9.9. Are there any additional groups, clubs or societies you would wish to see established? If so, please list them here and give your contact details on page 17, so we can bring together any groups with similar interests.				

10. About safety and security

We are interested in identifying any particular concerns on safety matters and gathering views on ways to address these.

	Strongly Agree	Agree	Disagree	Strongly Disagree
10.1. Grimsargh is a safe place to live				
10.2. If you indicated “Disagree” or “Strongly Disagree” above, what additional safety measures would you wish to see in the Village?				
10.3. If you indicated “Strongly Agree” or “Agree” – what it is about Grimsargh that makes you feel safe?				

	Strongly Agree	Agree	Disagree	Strongly Disagree
10.4. Policing services in our Village are adequate				
10.5. If you indicated “Disagree” or “Strongly Disagree” above, what particularly concerns you?				
10.6. Any general comments about safety and security in Grimsargh?				

11. About ecology, heritage and community assets

Grimsargh has a number of assets – but how highly do you value them? Your responses here will be useful in gaining views on what really matters to people

11.1. The following public, heritage and community assets are important to the identity of Grimsargh:	Strongly Agree	Agree	Disagree	Strongly Disagree
War memorial				
Old Stocks next to war memorial				
Wetlands				
Nellie Carbis Millennium Woodland				
Village Hall				
Grimsargh Club				
Plough Inn				

11.2. The following open green spaces in the village are important to the identity of Grimsargh:	Strongly Agree	Agree	Disagree	Strongly Disagree
a) Village green				
b) Open space between The Hills and the industrial estate				
c) Open space off Douglas Lane, behind Village Hall				
d) Any other green spaces within the Settlement Boundary, of particular importance to you please state here:-				

	Strongly Agree	Agree	Disagree	Strongly Disagree
11.3. The nature features on the village green (bug hotel, pond, wildflower meadow and willow weaving) are valuable attributes.				
11.4. Would you like to see similar approaches elsewhere in the village? If so please say where below.				

11.5. Any other comments? Please tell us below – you can add additional pages if you need to!:-

12. Thank You – and Contact Details

Many thanks for taking the considerable time required to read and complete this questionnaire. We really appreciate that you care about our village as much as we do – and want to contribute towards its positive future.

Should you require assistance in completing the questionnaire, then please contact the Chairman of the Steering Group, Lindsay Philipson, on 01772 654983 and we will endeavour to help.

If you have indicated that you are interested in new or existing groups, or in establishing additional facilities for teenagers, then you will need to give your contact details below:

Alternatively, if you want to be included in our “Thank You” competition, with a chance to win this lovely prize donated by The Plough, then give your contact details below:



Name:

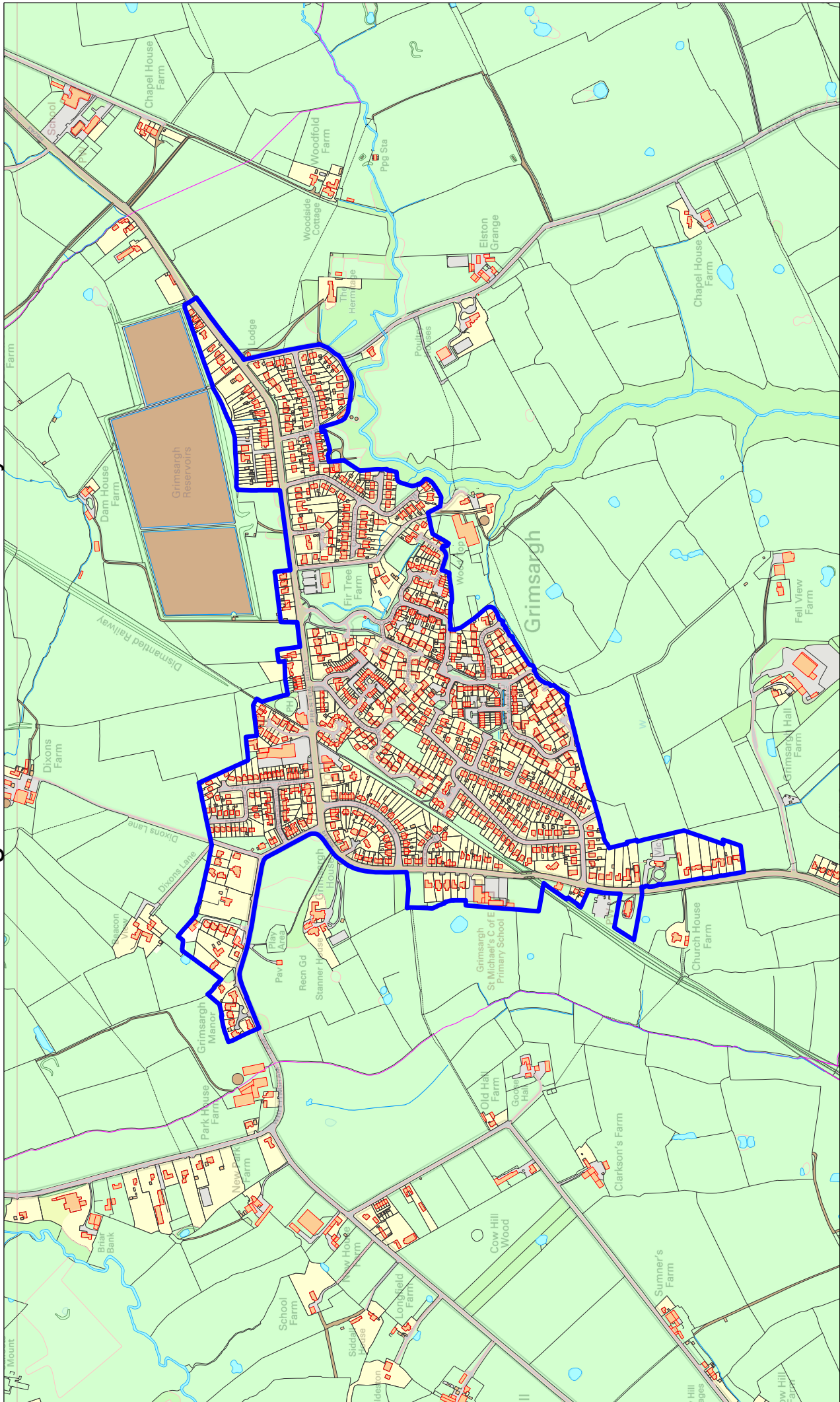
Address / email address :

Phone number:.....

Please remember, completed questionnaires to be handed in by 30th September 2017



Grimsargh Rural Settlement Boundary

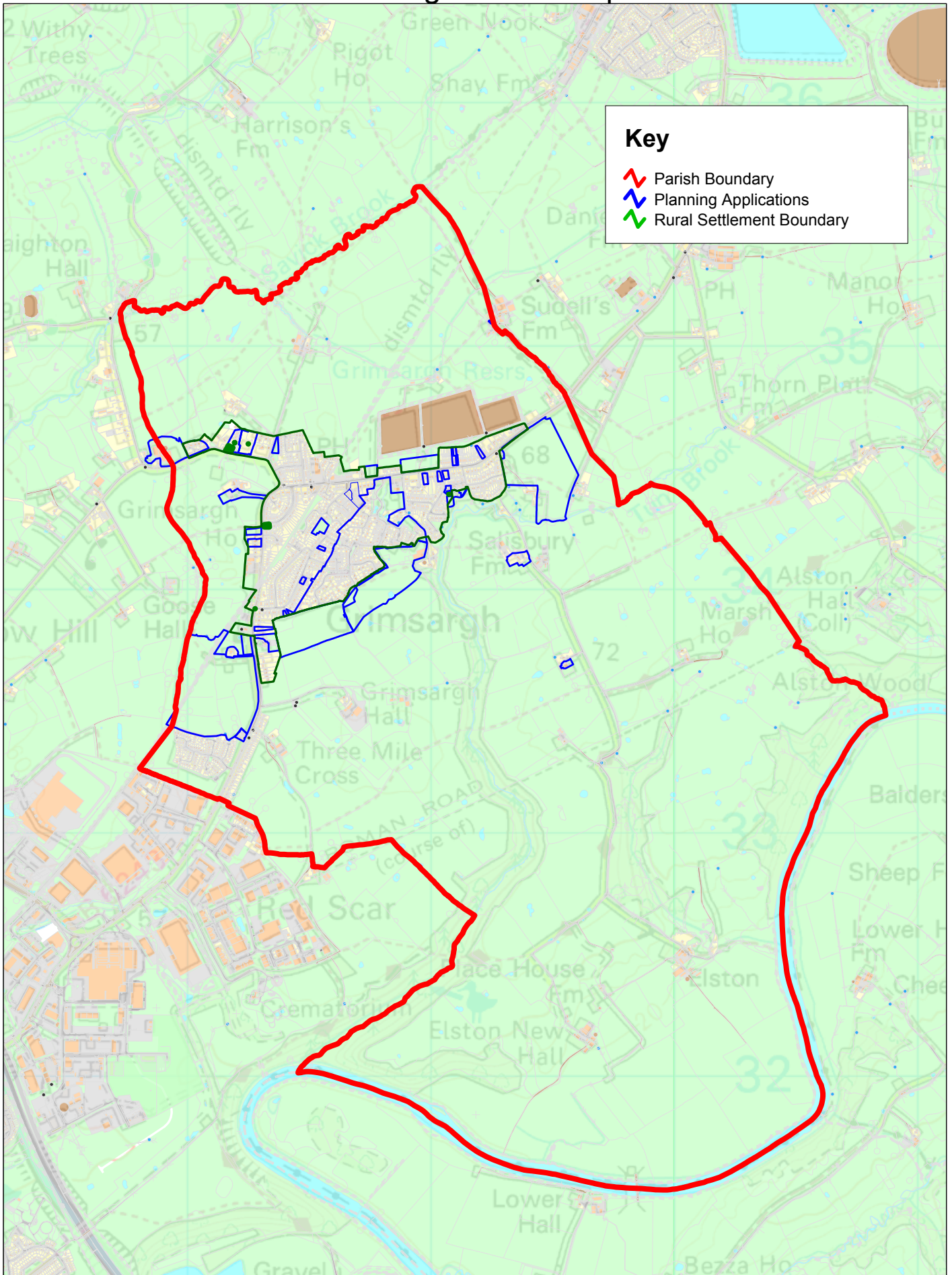


Grimsargh Parish Council

© Crown copyright and database rights.
 Ordnance Survey Licence Number 100059121

Operator:	LH
Department:	PSU/PP
Drawing No:	GNP/01
Date:	31/08/2017
Scale:	1:6872

Grimsargh Parish Map



Key

- Red line: Parish Boundary
- Blue line: Planning Applications
- Green line: Rural Settlement Boundary

Grimsargh Parish Council

©Crown copyright and database rights.
Ordnance Survey Licence Number 100059121.

Operator:	LH
Department:	PSU/PP
Drawing No:	GNP/02
Date: 31/08/2017	Scale: 1:1